

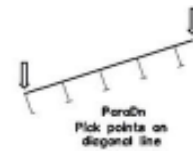


The Disk Exchange Network

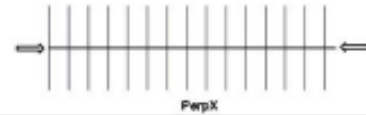
A Service of Cheap Tricks®
<http://CheapTricksNews.com>

For information on Membership, Disk Exchange Guidelines, & Royalty stipulations, contact
Shu Associates, Inc.
 120 Trenton St.
 Melrose, MA 02176-3714
 (781)662-0020 (Tel. & Fax.) eshu@world.std.com

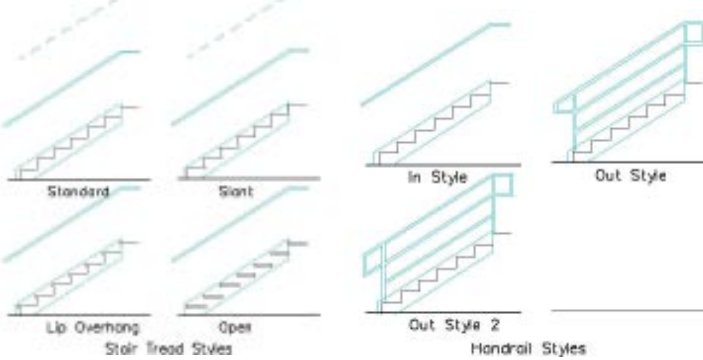
New CTW Listing
 Winter 2014b



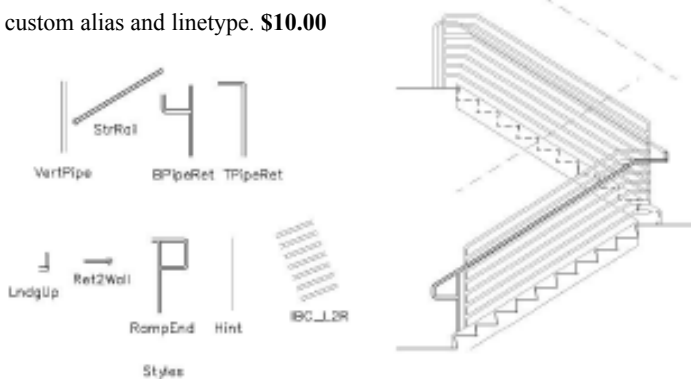
P256 EZ_Parking



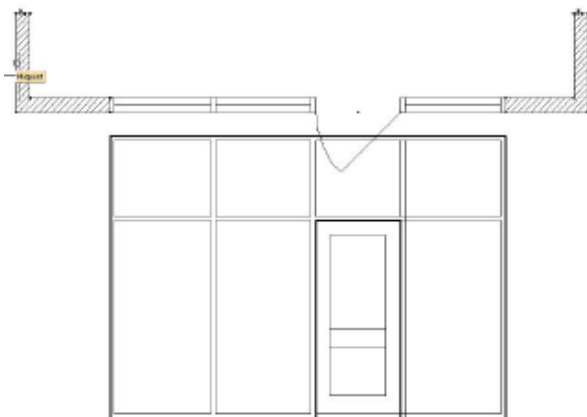
Send Orders to Shu Associates Inc., 120 Trenton St., Melrose, MA 02176-3714 USA (781)662-0020 Tel & Fax <http://CheapTricksWrae.com>



P250 EZ_Stairs 2.0 by Oran Woody. An easy intuitive macro to help you draw straight run or return 2D stair sections (7 style types) and stair plans. Input just a few settings and you are ready to go. It fills the gap that DataCAD's DCAD_AEC Stair and 3D Stairs macro leave in accomplishing these common but complex drafting tasks. Now *updated* (again) to provide 15 more options for stair rails, including IBC compliant styles -- and *newly added* improved control, hints, and a custom alias and linetype. **\$10.00**

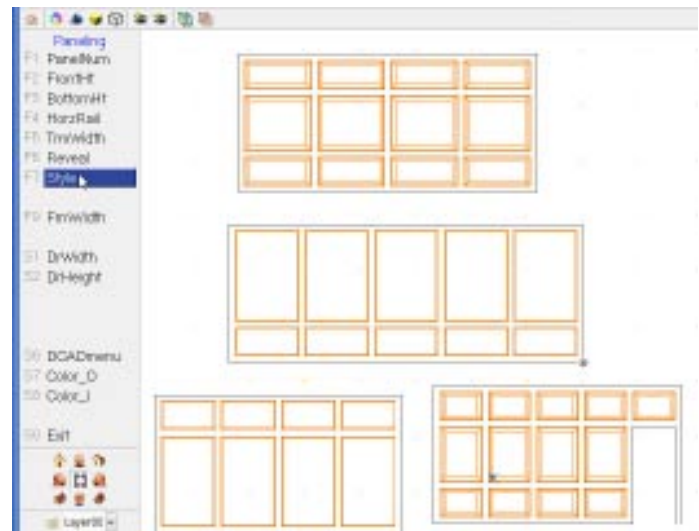


P251 EZ_Storefronts by Oran Woody. Here is another "entry" in this line of easy intuitive macros, this time to help you draw a typical storefront, allowing you to set number of panels, frame sizes, and door with transom. 17 different style types and 14 variable settings. Now also with plan capability added! **\$10.00**



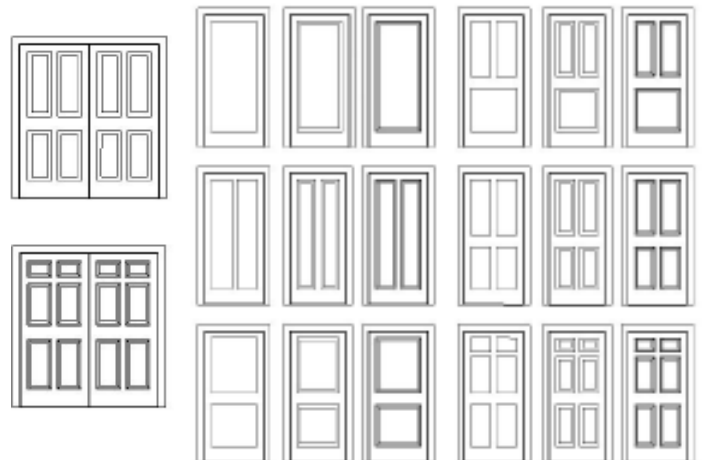
P252

EZ_Paneling by Oran Woody. EZ_Paneling is a macro that can be used to draw elevations of wood wall paneling quickly and easily. Sixteen styles are available that include: *Full height flat panels* (which can also be used to create a wainscot); *Transom height flat panels* with full flat panels below; *Triple flat panels*; *Wainscot height flat panels* with full flat panels above and more. **\$10.00**



P253

EZ_Doors by Oran Woody. EZ_Doors is a macro that can be used to draw elevations of wood panel doors quickly and easily. Six primary styles with three variations each are available as shown in the illustration below. **\$10.00**

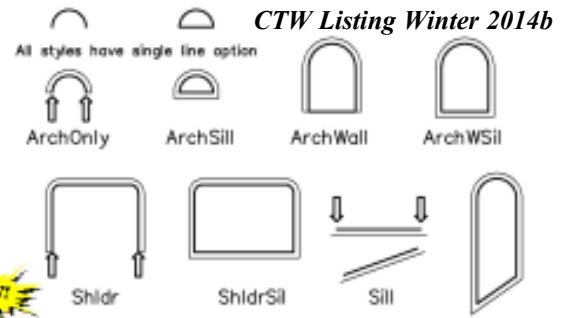




The Disk Exchange Network

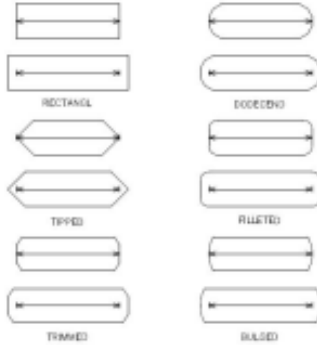
A Service of Cheap Tricks®
<http://CheapTricksNews.com>

For information on Membership, Disk Exchange Guidelines, & Royalty stipulations, contact
Shu Associates, Inc.
 120 Trenton St.
 Melrose, MA 02176-3714
 (781)662-0020 (Tel. & Fax.) eshu@world.std.com



P254

EZ_Detail Boxes by Oran Woody.
 A macro that can be used to draw 16 different types of detail boxes at any angle or direction and can snap to uniform buffer distance around text. **\$10.00**



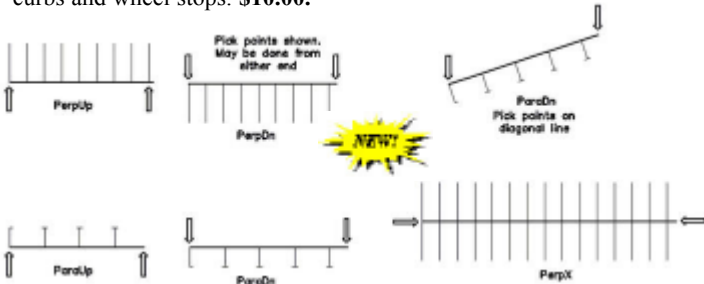
P255

EZ_Joist by Oran Woody. This macro will draw elevation views of a realistic (but not engineered) open web steel joists to your specifications in the typical EZ methodology of "pick two points." This macro provides 3 main styles of parallel chord joists: K, LH, and DLH. **\$10.00**



P256 EZ_Parking

by Oran Woody. This macro will help you to layout parking lots by drawing a string of parking spaces along the line you indicate for parallel, perpendicular or angled (60° or 120°) in 8 different styles (5 variations), complete with curbs and wheel stops. **\$10.00**



B125 EZ Elevations Plus (Plus!)

by Oran Woody. Numerous new styles and capabilities beyond the standard EZTools macro that comes with DataCAD. **\$15.00.**

Note: The base EZ Tools is included in DataCAD 7.10 and up BUT it doesn't include many of the features included in this version

P257 EZ_Arches by Oran Woody. Thinking of parking islands and curbs led to the creation of this macro that has a lot of general architectural use whenever you are doing fillet trim, arched windows, or, yes, even parking islands -- anytime you want offset arched components. This handy macro is **FREE** with any other EZ macro (P250-P256) or **\$10.00**

B-EZ by Oran Woody. Any TWO Prime (P) items from the EZ family of macros of your choice for the price of one B item. A \$20 value for only **\$15.00.**

M-EZ by Oran Woody. ALL of the Prime (P250-P257) items from the EZ family of macros. An \$70 value(!) for only **\$35.00.**

ORDER FORM

DISK #	DISK TITLE	COST

***Internet Delivery Via ZIP**
 (No shipping charges!) SUBTOTAL

Delivery via CD **(\$3.00)**

Unlucky Mass. Residents, add 6.25% sales tax:
 (Canadians add \$2; International add \$5)

For US Next Day Air, Enclose additional \$17.00:

Cheap Tricks Ware Dollars Encl.
Please make checks payable to Shu Associates Inc.

NAME: _____
 COMPANY: _____
 ADDRESS: _____
 CITY: _____ ST: _____ ZIP: _____
 PHONE: _____ FAX: _____
 E-MAIL: _____ DCAD Vers. _____
 Payment Method: US Check or Int. Money Order or
 VISA MasterCard AMEX Discover(Print# / Exp)
 Exp.Date _____
 CCV# _____
 Card Holder's
 Signature: _____

Or Order Online at <http://CheapTricksWare.com>